

Preadmission Screening and Resident Review (PASRR)

Medi-Cal Managed Care Plans (MCPs) Presentation

California Department of Health Care Services

March 30, 2023

Room Expectations

- » You will be automatically muted as you enter.
- » Please type your questions in the chat box.
- » Please note, questions shared in the chat will be addressed during the Q&A sessions that will be offered throughout the presentation.
- » Any questions that are not addressed during the presentation Q&A sessions will be included in a Frequently Asked Questions document.

Purpose

The purpose of this presentation is for the Department of Health Care Services (DHCS) to provide MCPs with information that will help guide them through the PASRR process.



Overview

In this presentation you will learn about:

- » PASRR Overview
- » PASRR Program Changes
- » MCP Responsibilities



Common Acronyms

Acronym	Term/Phrase
CP	Consulting Psychologist
DDS	Department of Developmental Services
DHCS	Department of Health Care Services
EHD	Exempted Hospital Discharge
GACH	General Acute Care Hospital
ID/DD/RC	Intellectual Disability/Developmental Disability/Related Conditions
PASRR	Preadmission Screening (PAS) and Resident Review (RR)
SMI	Serious Mental Illness
SNF	Skilled Nursing Facility

PASRR Overview

The title 'PASRR Overview' is centered in a large, bold, black sans-serif font. Below the text, there are three overlapping, wavy horizontal bands in shades of purple, ranging from a dark magenta to a light lavender, creating a decorative graphic element.

PASRR Defined - PAS

The Preadmission Screening (PAS) is a federal requirement (*Code of Federal Regulations (CFR), Title 42, Sections 483.100-138*) for all members initially entering a SNF to determine if they have a possible SMI or have an ID/DD/RC.



PASRR Defined - PAS

If a member is found to have a possible SMI or ID/DD/RC, the Level II evaluation helps determine whether SNF care is appropriate or whether the member needs specialized services beyond services typically provided in a SNF.



PASRR Defined - RR

The Resident Review (RR) is the federal requirement that members currently residing in a SNF who have a SMI or ID/DD/RC must be reviewed to determine whether the resident still requires a change in specialized services based on a significant change in condition.



PASRR Defined - RR

Previously required annually, the RR is now only required when there is a significant change in the member's physical or mental condition.

« ***Public Law 104-315***



PASRR Defined - RR

A “significant change” is a decline or improvement in a member's status that:

1. Will not normally resolve itself without intervention by staff or by implementing standard disease-related clinical interventions, the decline is not considered “self-limiting”;
2. Impacts more than one area of the member’s health status; and
3. Requires interdisciplinary review and/or revision of the care plan.

Who Requires a PASRR?

Federal regulation indicates that a PASRR is required for all members who apply for admission into a Medicaid certified SNF, regardless of the individual's insurance type or payment source.

This requirement also applies to members who already reside in a Medicaid certified SNF.

PASRR Responsibilities - PAS

GACH

- » Required to perform the PAS on any member being discharged to a SNF



SNF

- » Required to perform the PAS only when an member is being admitted directly from the community



PASRR Responsibilities - RR

GACH

- » Not required to perform the RR since the member is not a resident of the hospital



SNF

- » Required to initiate RR by submitting Level I Screening only when there is a significant change in the member's physical or mental condition



PAS Process – Level I Screening

Submitted by the facility through the PASRR Online System at <https://portal.dhcs.ca.gov/> by the:

- » GACH
- » SNF (*only if being admitted directly from the community*)

Screening is based on medical records as well as any direct observation that might lead the screener to suspect that there is a PASRR condition, such as a:

- » SMI
- » ID/DD/RC

RR Process – Level I Screening

- » Submitted by the SNF through the PASRR Online System.
- » Only performed if a significant change in condition is discovered.
- » Restarts the PASRR process.

RR Process – Psychotropic Medications

The introduction of a psychotropic medication at the SNF should trigger a notification to DHCS (State Mental Health Authority) or DDS (Developmental Disability Authority) for a change in condition. DHCS or DDS will determine if an evaluation is needed during the Resident Review process.

PASRR Process – Level II Evaluation

SMI

- » Performed, as required by law, by a third-party contractor on behalf of DHCS
 - » Kepro

ID/DD/RC

- » Performed, as required by law, by the DDS
 - » Regional Centers



- » Face-to-face evaluation (or telehealth, when available) that helps determine placement and specialized services.

PASRR Process – Determination

DHCS

- » Determinations for SMI will be available in the PASRR Online System.



DDS

- » Determinations for ID/DD/RC will be provided in the form of a PASRR Summary Report.



PASRR Letters

PASRR completion results in one of the following letters:

PASRR Letters to SNF

Notice of No Need

EHD*

Determination Letter (DHCS)/Summary Report (DDS)

Categorical

Attempt – No SMI

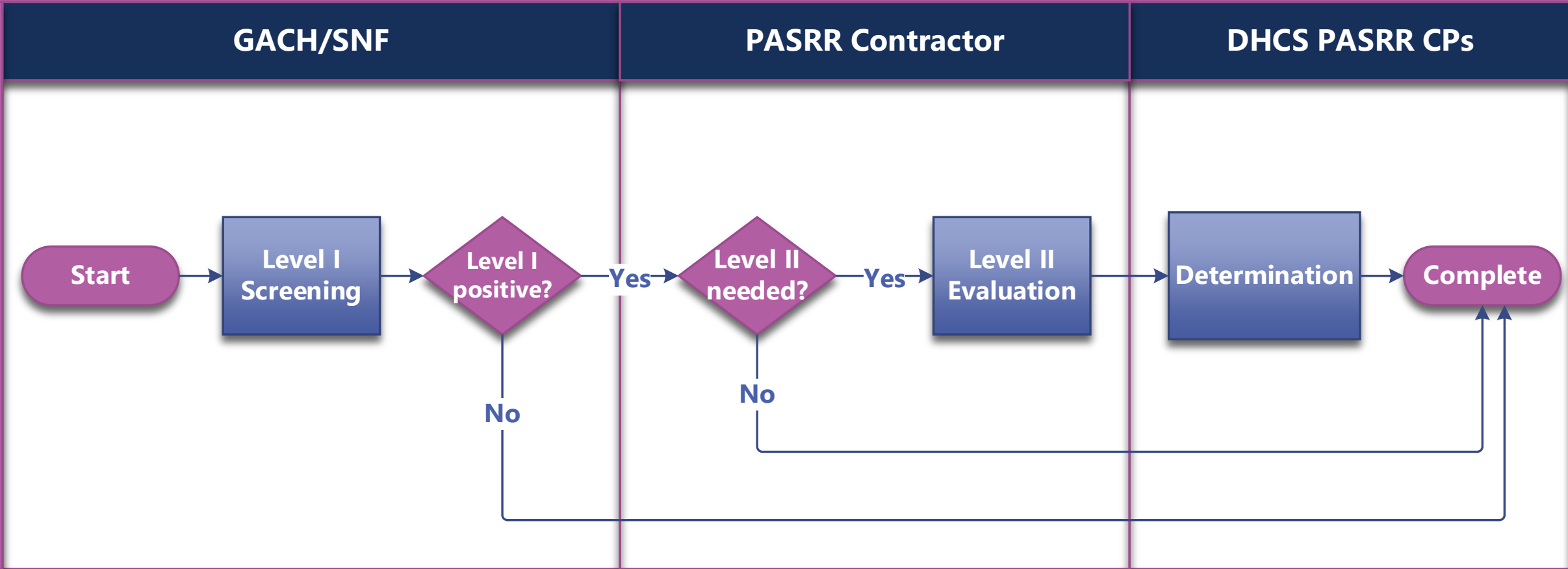
*SNF stay is anticipated to be less than 30 days.

Review of PASRR

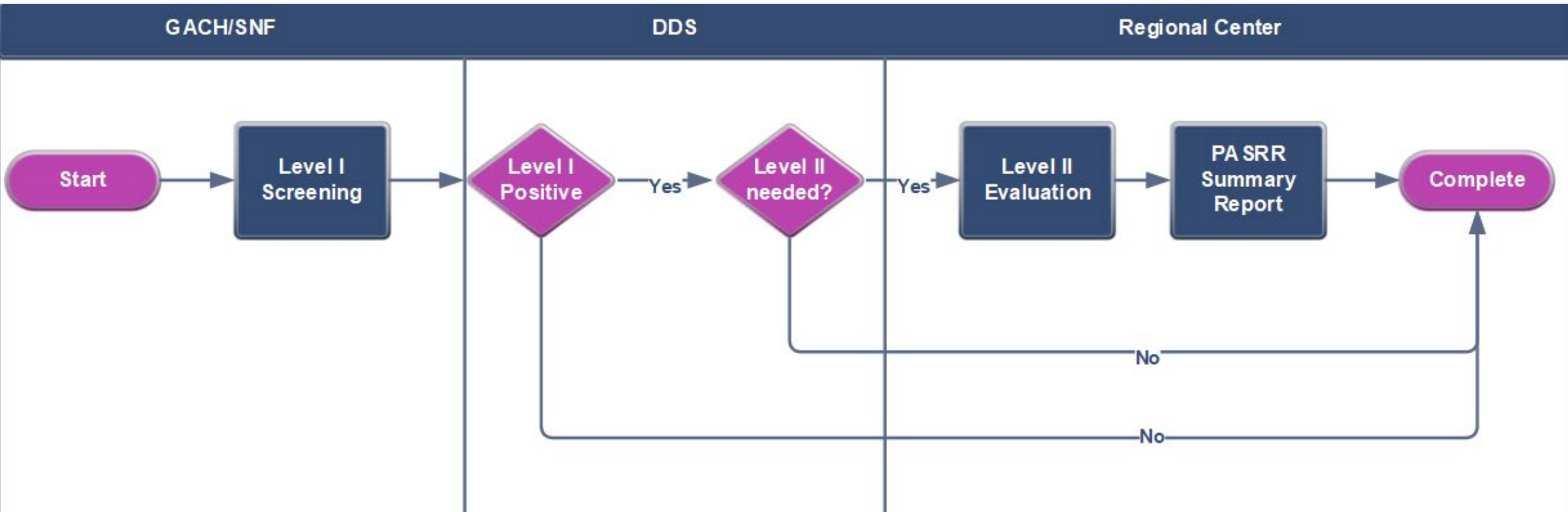
- » Results of the PASRR will indicate that the member is either:
 - » **Negative** for an SMI or ID/DD/RC,
 - » **Positive** for an SMI or ID/DD/RC, or
 - » **Categorical** condition overrides positive for SMI, or
 - » **Exempt** from the PASRR process due to an EHD.
- » If **negative**, the member may be considered appropriate for the requested SNF level of care, if medically justified.
- » If **positive**, the determination letter/summary report will indicate other placement and/or treatment recommendations for the member.

PASRR SMI Process

PASRR SMI Process



PASRR ID/DD/RC Process



PASRR Program Changes

The image features a white background with the text 'PASRR Program Changes' centered in a large, bold, black font. Below the text, there are several overlapping, wavy, horizontal bands of purple and lavender colors that create a decorative, flowing effect across the width of the page.

PASRR Program Changes

- » California is required to be in compliance with GACH preadmission standards by **July 1, 2023**.
- » GACHs are now required to complete the PASRR process *prior* to a member's discharge to a SNF.
- » This includes the Level I Screening that is submitted by the GACHs through the PASRR Online System.

PASRR Program Changes

- » SNFs are discouraged from accepting and admitting any members *without* a completed PASRR.
- » Federal law prohibits FFP reimbursement for services provided to members prior to the PASRR completion.
 - » **CFR Title 42 § 483.122**

Medi-Cal Managed Care Plans (MCP) Role Overview

A decorative graphic consisting of several overlapping, wavy, horizontal bands in various shades of purple, extending across the width of the slide below the title.

MCP Role in PASRR

- » MCPs do not play a direct role in the PASRR process. Instead, MCPs play a part in the outcome of the PASRR process.
- » As the payer source, the MCP is responsible for the authorization of long-term care services that result from the PASRR process.
- » Beginning **May 1, 2023**, MCPs to ensure PASRR completion when authorizing SNF services.

Authorization Requests

- » When a certified Medicaid SNF accepts a MCP member, the SNF will submit an authorization request to the MCP for SNF services.
- » Information contained in the request must include the results of the PASRR (i.e., PASRR letter).
- » Additional documentation submitted by the SNF may contain:
 - » Minimum Data Set (MDS)
 - » Medi-Cal Long Term Care Facility Admission and Discharge (MC 171)

Appropriateness of Services

- » The MCP's role is to take the PASRR information into consideration when authorizing the request for SNF services.
- » Review of the PASRR determination helps the MCP ensure that their member is receiving the most appropriate care possible in the most appropriate setting that addresses both their physical and mental health needs, which is advantageous to both the MCP and their member.

Member Advantages

- » When the MCP authorizes services resulting from the PASRR determination, the member has the best chance at receiving the care that they need in the setting that is expertly deemed to be most appropriate for them.
- » Specialized treatment options for members with an SMI or ID/DD/RC are more abundant when the member is placed in the right setting, which can lead to better physical and mental health outcomes.

Conclusion

- » PASRR is a federally mandated program that provides a preadmission screening to help determine if an member has a SMI or ID/DD/RC that may require specialized services beyond that of a SNF.
- » California must be compliant with preadmission standards by **July 1, 2023**.
- » MCPs should take PASRR determinations into consideration and ensure completion when authorizing requests for SNF services beginning **May 1, 2023**.

Questions?

The bottom of the slide features a decorative graphic consisting of several overlapping, wavy horizontal bands in various shades of purple, ranging from a deep magenta to a light lavender. These bands create a sense of movement and depth, framing the bottom of the text area.

Contact Information

If you have any additional questions, please email the PASRR program at: PASRR@dhcs.ca.gov.





*Thank
You*